



Founders Day Convocation

February 7, 2017



Welcome



Matt C. Gerard
*Vice President for
University Relations*



John W. Nisbet
Vice President for Finance

Provost Search Update

February 1, 2017

- Met with the search firm Isaacson, Miller to review candidates.

February 28 and March 1, 2017

- Conducting off-site interviews.

March 2017

- Finalists will visit campus and complete interviews.

April 2017

- A candidate will be selected and hired.



An aerial night photograph of a university campus. A large, ornate Gothic-style building with a tall, pointed spire is the central focus. In the foreground, there is a circular fountain with water spraying upwards. The campus is surrounded by trees and other buildings, with city lights visible in the background under a dark sky.

University Updates



A laboratory setting with a gloved hand holding a beaker containing a clear liquid. In the background, there are test tubes in a rack, a yellow block with a test tube on top, and a pink block. The word "Research" is written in white serif font on a dark red background.

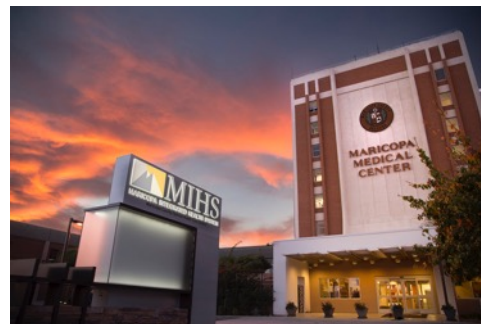
Research



CHI Health Creighton University
Medical Center – University Campus
Transition Completed June 2017

CHI Health Creighton University
Medical Center – Bergan Mercy
Completed by April 2017
Transition completed by June 2017





Diversity





23rd Annual Markoe-DePorres Lecture

Fred Pestello, PhD

President of Saint Louis University

Thursday, February 16, 2017

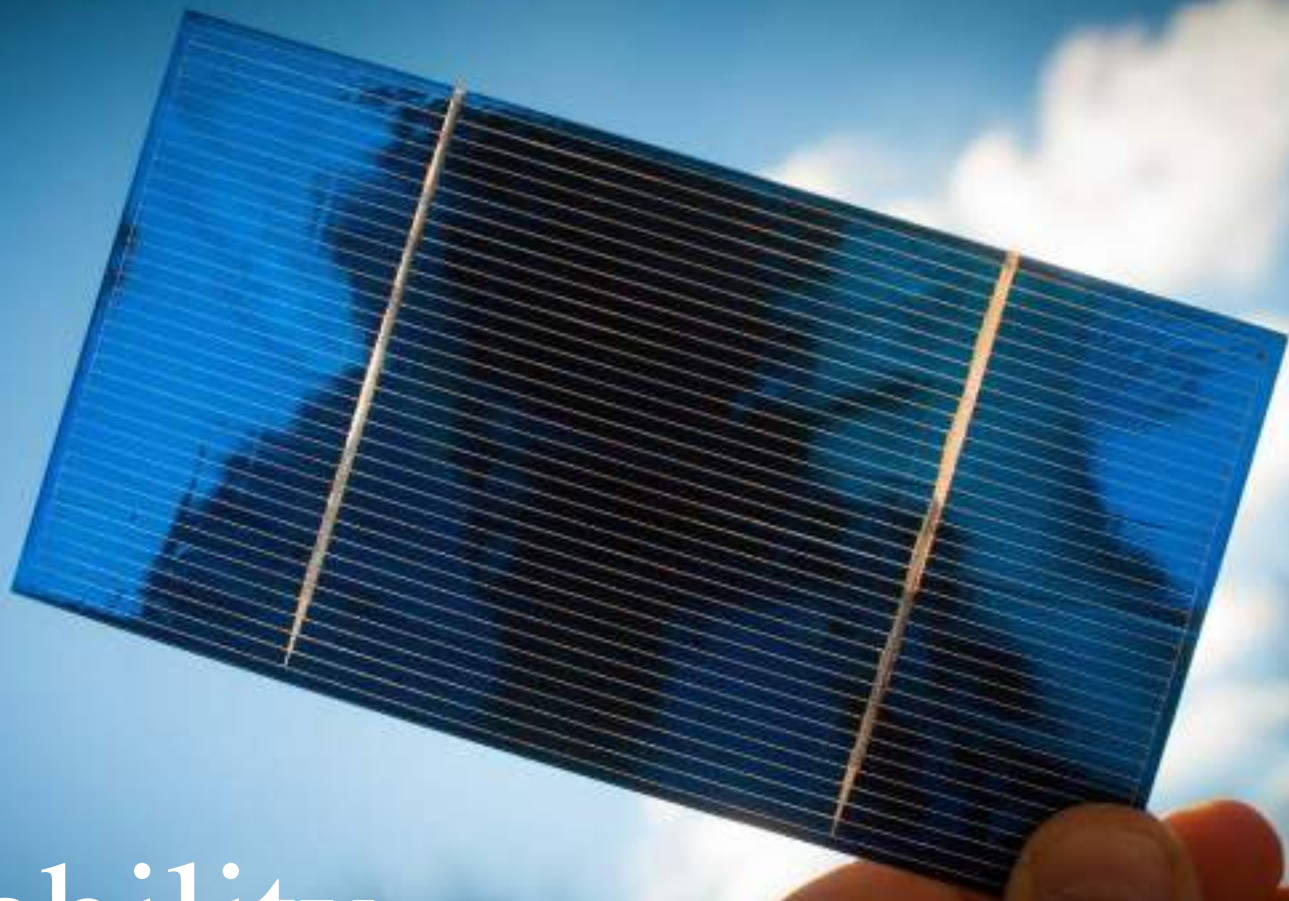
7:30–9:30 p.m.

Mike and Josie Harper Center
Hixson-Lied Auditorium



Intercultural





Sustainability



Service-learning



CREIGHTON
GLOBAL
INITIATIVE

A large crowd of students, many wearing blue shirts, are gathered under a large, ornate metal archway. The archway has the words "CREIGHTON UNIVERSITY" inscribed on it. In the foreground, two large blue banners are visible. The left banner features a circular logo with a cross and the text "MEN AND WOMEN FOR AND WITH OTHERS". The right banner features a circular logo with a cross and the text "AD MAJOREM DEI GLORIAM". The background shows a green lawn and trees.

CREIGHTON UNIVERSITY

Enrollment

Fall Admission

	App Submitted	App Complete	Admit Rate	Admits	Active Deposit
2015	9,089	6,776	66%	6,001	111
2016	9,717	7,133	66%	6,435	164
2017	9,022	7,267	70%	6,303	168



A background image of a university campus. On the left, there are lush green trees with some autumn-colored leaves. In the foreground, a bronze statue of a person stands on a pedestal. To the right, a blurred image shows a person walking on a path, and in the background, a large, ornate building with a clock tower is visible.

Financials

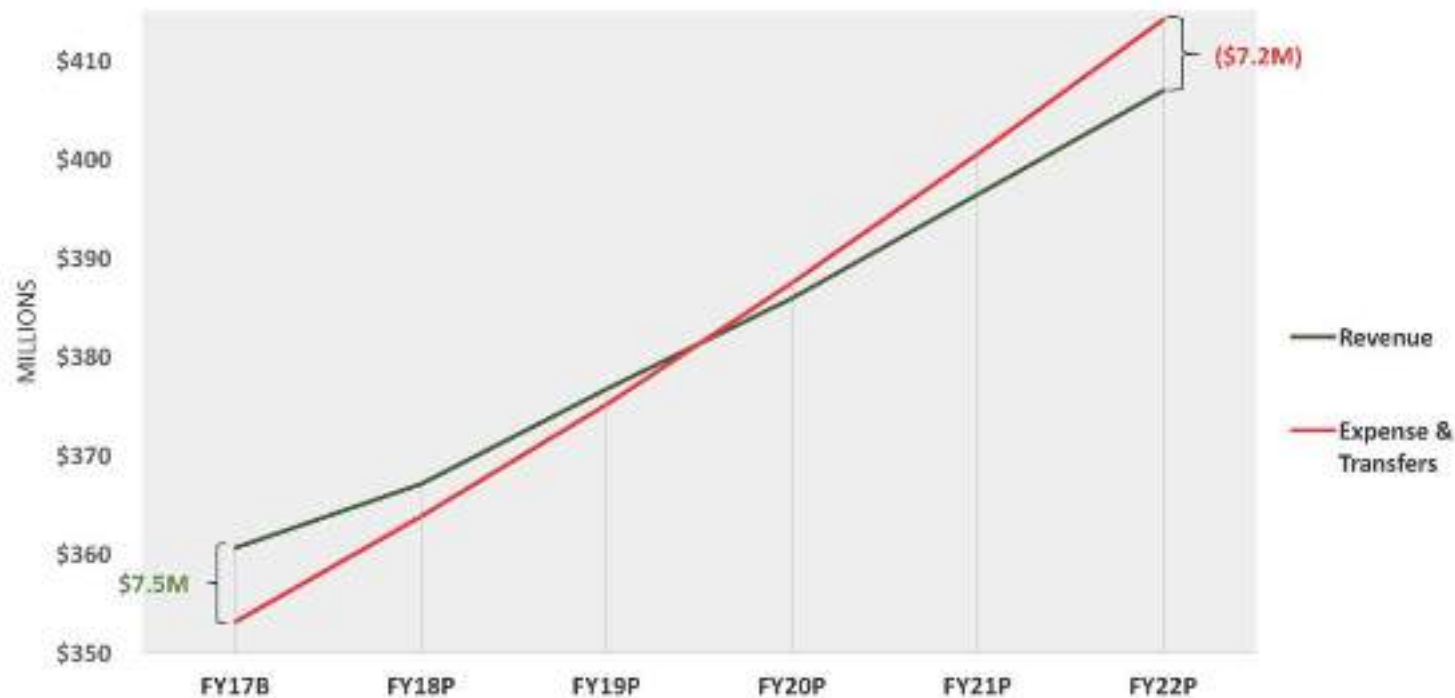
Operating Budget Results (\$Millions)

	<u>FY2014</u>	<u>FY2015</u>	<u>FY2016</u>	<u>FY2017 Budget</u>
Total Revenue	\$ 333.5	\$ 334.2	\$ 343.4	\$ 360.6
Total Expense & Transfers	<u>\$ 332.6</u>	<u>\$ 329.9</u>	<u>\$ 338.4</u>	<u>\$ 353.1</u>
Net Contribution	<u>\$ 0.9</u>	<u>\$ 4.3</u>	<u>\$ 5.0</u>	<u>\$ 7.5</u>

Operating Margin	0.3%	1.3%	1.5%	2.1%
------------------	------	------	------	------

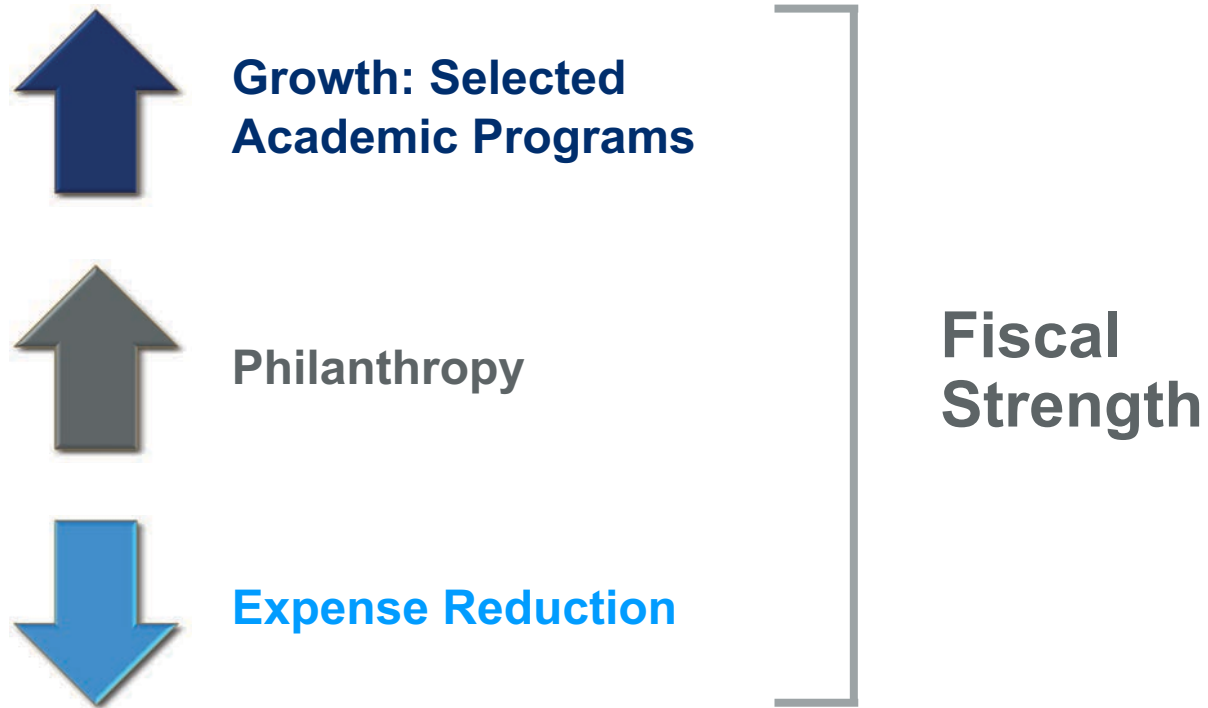
Target Margin 5% (minimum)

Projected Operating Revenue and Expense



Assumptions: achieve FY17 budget; enrollment flat except Dental; 2.5% tuition increases; flat discount rate; 3% merit increases; 6% benefit increases; 3% inflation







Ranked 9th
in the country,
a program record



24th appearance in
the NCAA Tournament
in the past 25 seasons

3.43 cumulative GPA
(highest ever)



Faculty Research Winners

Nancy Hanson, PhD

*Assistant Professor, Department of Medical Microbiology and Immunology,
School of Medicine*

- 2017 University Research Award for the Health Sciences

Michael Kelly, JD, LL.M

*Senator Allen A. Sekt Endowed Chair in Law, Associate Dean for Faculty Research
and International Programs, Professor of Law, School of Law*

- 2017 University Research Award for Non-Health Sciences



Academic Achievements

Holly Stessman, PhD

Assistant Professor, Department of Pharmacology, School of Medicine

- Received a grant from the Simons Foundation Autism Research Initiative for *In Vitro Modeling of Genetic Subtypes of Autism*, a three-year award totaling \$450,000.

Lynn Olson, PhD, Director of Elementary Education,

Associate Professor of Education, College of Arts and Sciences and

Jean Hearn, Early Childhood Education, Resident Assistant Professor,

College of Arts and Sciences

- Received an Improving Teach Quality grant from the State of Nebraska Coordinating Commission for Postsecondary Education. This 15-month grant for \$37,000 is titled *Preparing Paraprofessionals to Work Effectively in the Early Childhood Classroom*.



A photograph of two men walking side-by-side outdoors. The man on the left is wearing a dark blue suit, a light blue shirt, and a patterned orange tie. The man on the right is wearing a dark grey suit, a black shirt, and a black clerical collar with a white tab. They are both smiling and looking towards the right. In the background, there is a city skyline with a prominent tall building, a bridge, and some greenery. A microphone stand is visible in the foreground. The text "Pending Comprehensive Campaign" is overlaid on the right side of the image in a dark blue serif font.

Pending Comprehensive Campaign



Endowment: Scholarships



Endowment: Programs and Research

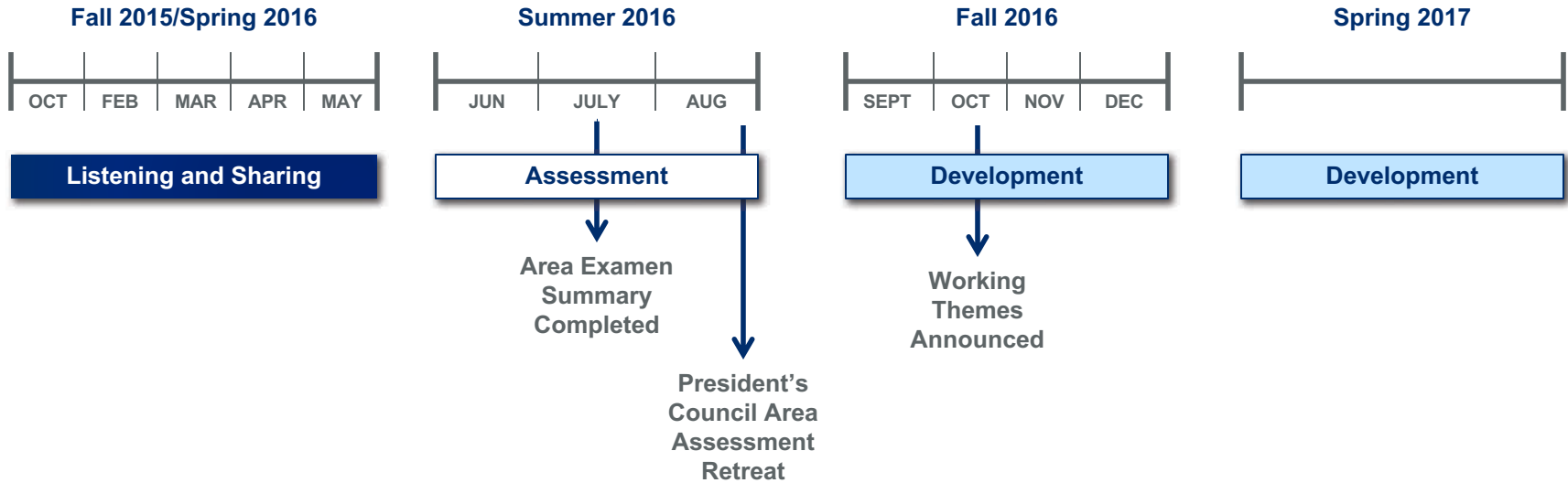


Capital: Campus Enhancements



The Strategic Plan

Mobilizing Tradition
for Innovation



Listening Process: Completed May 2016

- Six Listening Sessions
- Convocation
- Area Examen involving 24 reports

Fall: Feedback and Development

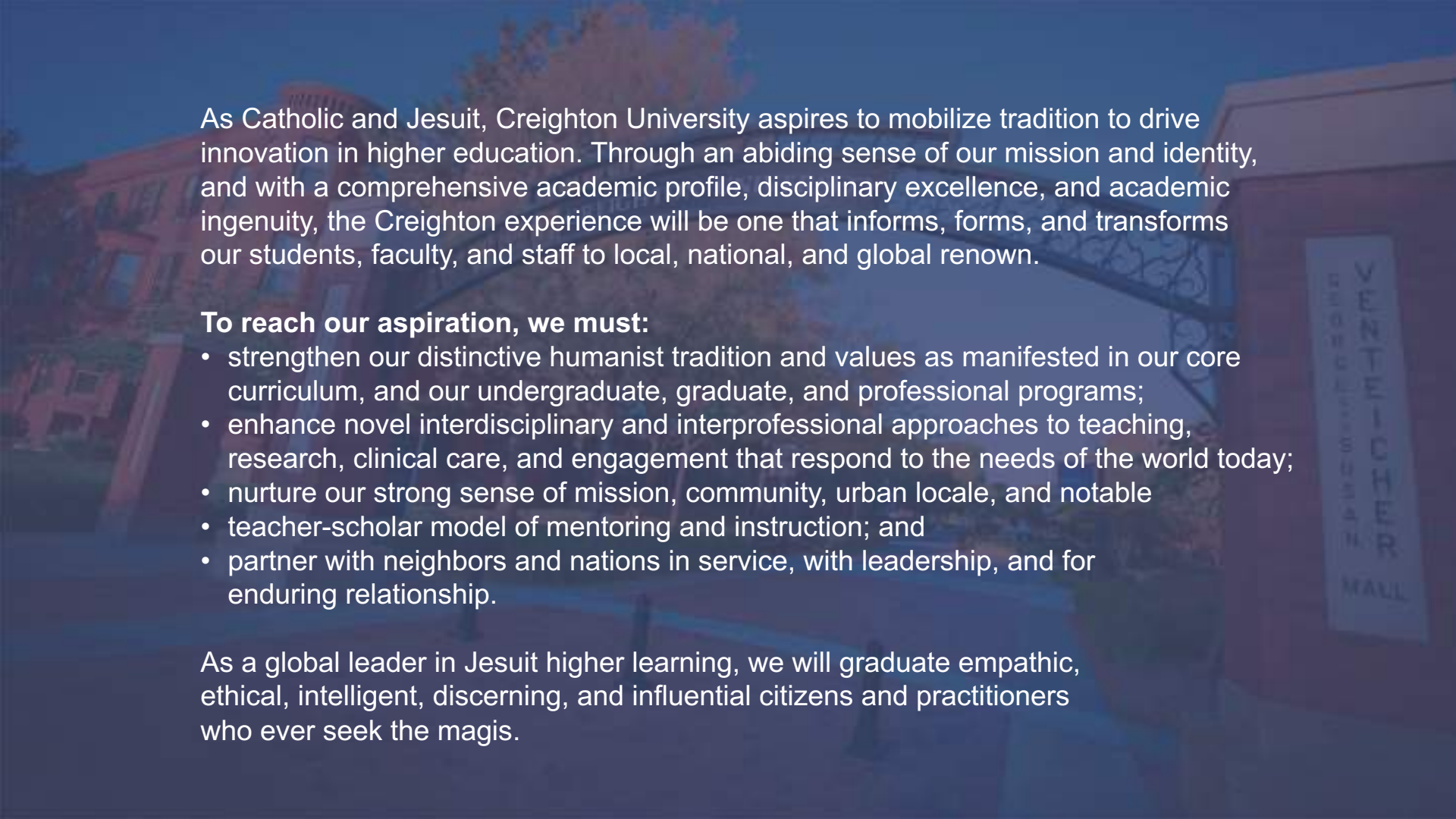
- Town Hall
- Website launches
- Plan structure announced
- Co-chairs, President's Planning Committee, Steering Committee named
- EAB environmental scan presentation

Spring: Development

- Goals developed based on associated themes
- Associated tactics/projects developed for goals
- Goal Stewards identified based on desired goals
- Goal Work Groups formed based on tactics/projects

A photograph of the Creighton University entrance archway, featuring a brick building on the left and a sign for Ventreicher Hall on the right. The archway is made of metal and has 'CREIGHTON UNIVERSITY' inscribed on it. The background shows trees and a clear sky.

Shaping the Future of Creighton: **The Vision**



As Catholic and Jesuit, Creighton University aspires to mobilize tradition to drive innovation in higher education. Through an abiding sense of our mission and identity, and with a comprehensive academic profile, disciplinary excellence, and academic ingenuity, the Creighton experience will be one that informs, forms, and transforms our students, faculty, and staff to local, national, and global renown.

To reach our aspiration, we must:

- strengthen our distinctive humanist tradition and values as manifested in our core curriculum, and our undergraduate, graduate, and professional programs;
- enhance novel interdisciplinary and interprofessional approaches to teaching, research, clinical care, and engagement that respond to the needs of the world today;
- nurture our strong sense of mission, community, urban locale, and notable
- teacher-scholar model of mentoring and instruction; and
- partner with neighbors and nations in service, with leadership, and for enduring relationship.

As a global leader in Jesuit higher learning, we will graduate empathic, ethical, intelligent, discerning, and influential citizens and practitioners who ever seek the magis.



As Catholic and Jesuit, Creighton University aspires to mobilize tradition to drive innovation in higher education. Through an abiding sense of our mission and identity, and with a comprehensive academic profile, disciplinary excellence, and academic ingenuity, the Creighton experience will be one that informs, forms, and transforms our students, faculty, and staff to **local, national, and global renown**.

To reach our aspiration, we must:

- **distinctive humanist tradition** on and values as manifested in our core curriculum, and our undergraduate, graduate, and professional programs;
- enhance novel **interdisciplinary and interprofessional** teaching, research, clinical care, and engagement that respond to the needs of the world today;
- nurture our strong sense of mission, community, **mission** scale, and notable
- teacher-scholar model of mentoring and instruction; and
- partner with neighbors **neighbors and nations** leadership, and for enduring relationship.

As a global leader in Jesuit higher learning, we will graduate empathic, ethical, intelligent, discerning, and influential citizens and practitioners who ever seek the magis.



Five Strategic Planning Themes





Thriving in Our Mission



Achieving
Academic Excellence



Creating Our Learning Environment



Engaging the World



Stewarding Our Resources



Diversity and Inclusion



Thriving in Our Mission

Humanist and Curricular Influences

Advancing Faculty
Research and Scholarship



Achieving Academic Excellence



Creighton Commons



Creating Our Learning Environment



Global Perspective



Engaging the World



Stewardship Initiative



Stewarding Our Resources

A detailed stained glass window depicting the Coronation of the Virgin Mary. The Virgin Mary is seated in the center, wearing a red mantle over a blue gown, with her hands raised in prayer. She is being crowned with a golden crown by an angel. To her left, another figure, possibly the Christ Child, is visible. The background features a blue sky with white clouds and a red cross. The window is made of various colored glass panes held together by lead lines.

Next Steps

CURE (Creighton University Research Exchange) in partnership with CHI Health Campus Forums

Mike White, MD, *School of Medicine*

- **February 24, 2017**, 3:30–4:30 p.m.
Hixson-Lied Science Building, G04
- **February 28, 2017**, 3:30–4:30 p.m.
Mike and Josie Harper Center, Hixson-Lied Auditorium



Phoenix – Educational Expansion and Patient Care Affiliations

Campus Forums

Dale Davenport, MHSA, *School of Medicine*

- **February 21, 2017**, 10:30–11:30 a.m.
Mike and Josie Harper Center, Room 3028
- **February 22, 2017**, 3:30–4:30 p.m.
Hixson-Lied Science Building, G04



Interprofessional Education (IPE)

Programs, Pedagogy and Education Facility

Campus Forums

Joy Doll, OTD, *School of Pharmacy and Health Professions*

- **February 21, 2017**, 8:30–9:30 a.m.
Mike and Josie Harper Center, Room 3028
- **February 22, 2017**, 2–3 p.m.
Hixson-Lied Science Building, G04



Stewardship of Resources

Campus Forums

Dan Burkey, *Division of Operations*

Tom Murray, PhD, *Office of the Provost*

- **February 15, 2017, 3:30–4:30 p.m.**
Hixson-Lied Science Building, G04
- **February 16, 2017, 2:30–3:30 p.m.**
Mike and Josie Harper Center, Room 3028





A scenic view of a university campus. In the background, a large, ornate building with multiple spires and a grey facade is visible under a blue sky with scattered white clouds. The foreground features a wide, paved walkway made of reddish-brown bricks. To the left of the walkway is a landscaped area with tall, feathery grasses and various green and yellowing shrubs. A person with a backpack is walking away from the camera on the left side of the path. To the right, there are more trees with autumn-colored leaves, a black lamppost with a white globe, and a small sign attached to it. Several other people are walking further down the path in the distance.

Q & A



creighton.edu/strategic-plan