



Town Hall

October 11, 2016

Provost Search Update

July 2016

- Search firm hired: Isaacson, Miller

September 2016

- Chairs and members of the search committee named



Provost Search Committee

Tim Dickel, EdD, *professor of education, chair*

Lannette Chavez, *paralegal, Office of General Counsel*

Gary Gates, *University trustee and former chief executive officer of OPPD*

Tara Koth, *administrative assistant, University Communications and Marketing*

Kyle Lierk, *director, Campus Ministry*

Kayman Nixon, *senior in the Heider College of Business and CSU president*

Desiree Nownes, *director, Center for Student Integrity*

René Padilla, PhD, *director of the Global Engagement Office*

Tom Pisarri, PhD, *assistant professor of biomedical sciences in the School of Medicine*

The Rev. Ross Romero, SJ, *assistant professor of philosophy*

Janet Seger, PhD, *professor of physics*

Catherine Todero, PhD, RN, *dean, School of Nursing*

Deborah Wells, PhD, *associate dean and associate professor of management,
Heider College of Business*



Provost Search Update

October 2016

- First meeting of the search committee held on October 4, 2016
- Online scoping process
 - Seeking desired characteristics, input on important issues and how to determine the success of a provost
- Development of prospectus

December 2016–January 2017

- Review and narrowing of candidates by committee

February–March 2017

- Committee interviews candidates

March–April 2017

- Final candidates on campus and candidate selection



Provost Search Update



Looking Back: 2015–2016



A man with glasses, wearing a dark blue suit jacket over a black clerical shirt with a white collar, stands in the center of the frame. He is holding a silver microphone in his right hand and appears to be speaking. He has a small pin on his left lapel. In the background, a group of young people, mostly students, are seated in bleachers. Some are looking towards the speaker, while others are looking away. The setting appears to be an indoor arena or gymnasium. The lighting is focused on the speaker, with the background being slightly dimmer.

Fall 2015 Listening Sessions



February 2016
University Convocation Address

Spring 2016 Area Examen Process

Creighton University Area Examen

Announcement

As announced at the Founders Week Convocation Address, I am inviting the University into an Area Examen process. The Examen of Conscience of the Society of Jesus is a method of praying that is reflective of our experiences, including the presence of God. Developed by St. Ignatius of Loyola, the founder of the Jesuits, it is representative of an Ignatian spirituality that is personal, practical, and accessible. It is also adaptable, and to this end, I ask us to embrace its dimensions of thoughtfulness and focus.

The purpose of the Area Examen is to recognize how each of our departments or units enhances the mission of Creighton as well as to consider institutional initiatives that continue propelling us forward. The process will result in shared discussions through our structures of leadership as well as in open forum on Friday, April 22, 2016. As we collectively discuss our contributions to our Catholic and Jesuit identity, and themes and issues that impact our campus, it will inform me on how Creighton University can continue planning for the future.

Instructions

Through the remainder of the semester, the chair or leader of your department or unit will invite you to discuss the Examen questions in a way that is suitable to your area. In turn, she or he will collate responses in themes, and share them in regularly scheduled college and divisional meetings with deans, directors, and the leadership structures of the university. To assist the process, each group should appoint a note-taker who will assist the chair or leader in recording and synthesizing shared responses.

Additionally, the group note-taker will be invited to attend an all University roundtable discussion on Friday, April 22, from 9 to 11 a.m. or 1 to 3 p.m., in the Ahmanson Ballroom of the Harper Center. If you are not a note-taker of your group but would like to participate in one of the workshops, please feel welcome to attend. By April 15, note-takers and interested participants should RSVP for a morning or afternoon session. The registration links will be available in *Creighton Today*.

If chairs or leaders of departments or units would like the assistance of a group facilitator, please contact Carol Krajcek in the Division of Mission and Ministry at carol@divofmjc@creighton.edu.



Examen Questions

1. How is our department or unit distinctive or expressive of Creighton's Jesuit, Catholic educational mission? What contribution do we make that is special, important, and necessary to the daily life and work of Creighton? How might the following elements of Catholic and Jesuit identity be recognized in your area: faith expression, service to others, commitment to humanism, global perspective, and the pursuit of justice?
2. How do we contribute to the communal character of the University? How do we witness and celebrate the talent and contributions of our members? In regard to the varying contexts of our campus, our city, the nation, and the world, what challenges does our department or unit presently face? What social, cultural, economic, and technological realities affect our work?
3. How do we participate in and enhance academic excellence, community engagement, mission and identity, and stewardship of resources of the University?
4. How can we embrace and impact the issues of diversity, sustainability, service-learning, shared governance, and institutional planning?
5. In the course of the next five years, what do you dream or imagine will make Creighton University extraordinary?

Summer 2016

Summary analysis of the Area Examens

AREA EXAMEN WORKGROUP

Eileen Burke-Sullivan, STD, *Mission and Ministry*

Amy Cosimano, EdD, RN, *College of Nursing*

Andy Gustafson, PhD, *Heider College of Business*

Cindy Hadenfeldt, EdD, RN, *College of Nursing*

Erika Kirby, PhD, *College of Arts and Sciences*

Tom Lenz, PharmD, *School of Pharmacy and Health Professions*

Susan Naatz, MS, *Mission and Ministry*

Anne Schoening, PhD, RN, CNE, *College of Nursing*

LuAnn Schwery, MS, *Graduate School*

Summer 2016

Appointed co-chairs to lead planning process



Mary E. Chase, EdD
*Vice Provost for Enrollment and
University Planning, co-chair*



Paul E. McGreal, JD, LLM
Dean of the School of Law, co-chair

Summer 2016

Area Assessment
exercise focused on
three categories
including:

- context
- imminent realities
- Creighton150



Presidential Planning Committee Formed

- The purpose of the Presidential Planning Committee (PPC) is to assist the president in authoring and implementing a new strategic plan for the University in collaboration with the campus community.
- The PPC will assist in developing a transparent and inclusive strategic planning process, and ensuring timely and meaningful communication to the University community.
- **The planning process will:**
 - Develop themes, goals, and tactics
 - Establish benchmarks to assess progress
 - Evaluate resources for realizing the new plan



President's Planning Committee

Kristie Briggs, PhD, *Heider College of Business*

Dan Burkey, *Senior Vice President for Operations*

Mary Chase, EdD, *Vice Provost for Enrollment and University Planning, co-chair*

Heather Fryer, PhD, *College of Arts and Sciences*

The Rev. Daniel S. Hendrickson, SJ, *President*

Gail Jensen, PhD, *Dean of the Graduate School and College of Professional Studies*

Paul McGreal, JD, LL.M., *Dean of the School of Law, co-chair*

Tom Murray, PhD, *Interim Provost*

Kristina Simeone, PhD, *School of Medicine*

Tanya Winegard, PhD, *Vice Provost for Student Life*





Steering Committee

Major responsibilities

- Critical link between the strategic planning process and the University community at large.
- The Steering Committee members will bring the voice of the campus community to the planning process.
- The committee is composed of faculty and staff members who represent a cross-section of the University community.

A photograph of an elderly woman and a young woman smiling at each other in a village setting. The elderly woman is wearing a patterned headwrap and a floral-patterned shirt. The young woman is wearing a grey t-shirt and has sunglasses on her head. In the background, a group of children in blue school uniforms are standing near a school building. The text "Presidential Initiatives" is overlaid in white serif font.

Presidential Initiatives

CREIGHTON
GLOBAL
INITIATIVE

An aerial photograph of a university campus at dusk. In the foreground, a circular amphitheater with tiered seating and a central fountain is visible. To the right, a large, ornate Gothic church with a tall, dark spire stands prominently. The campus is filled with green lawns, trees, and winding pedestrian paths. In the background, various university buildings and a city skyline are visible under a twilight sky with a warm orange glow on the horizon.

Plan Essentials

The Planning Context



Working Themes

- Mission Enhancement
- Academic Excellence
- Campus Environment
- Institutional Outreach
- Stewardship of Resources





Mission Enhancement

Theme No. 1

Creighton is Catholic and Jesuit comprehensive university committed to a person-centered approach to formation of the men and women who teach, live, learn, and work on its campus, and to nurturing a passion for excellence in its community of value-oriented, innovative thinkers engaged in creating a more just, healthful, and vibrant world for all.



Academic Excellence

Theme No. 2

Creighton's comprehensive undergraduate, graduate, and professional programs are committed to cultivating intellectual rigor through high impact learning, research, and service from a humanistic perspective that educates critical thinkers who will meet the challenges of the global community.

Campus Environment

An aerial photograph of a university campus. In the foreground, several large, multi-story red brick buildings with grey roofs are visible. A central green lawn is surrounded by these buildings. In the background, a city skyline with various skyscrapers and buildings is visible under a blue sky with light clouds.

Theme No. 3

Creighton provides the structures, spaces, and technology for the students, faculty, and staff of its comprehensive undergraduate, graduate, and professional programs to work collaboratively and intentionally to serve inclusiveness, environmental stewardship, respectful dialogue, accountability, and faith that does justice in our daily life.



Institutional Outreach

Theme No. 4

Creighton is a committed partner recognized for its selective excellence and innovation in meeting the complex challenges of the present and realizing the possibilities for the future on a local, national, and international scale.



Stewardship of Resources

Theme No. 5

Creighton is committed to thoughtful stewardship that cultivates and grows the human, capital, and financial resources needed to serve our mission of providing students of all backgrounds with an affordable undergraduate, graduate, and professional education.



Questions & Comments

Steering Committee Membership

The Steering Committee consists of:

- President's Planning Committee
 - President
 - Co-chairs
 - Senior VP
 - Three faculty members
- Seven faculty members
- Seven staff members

The committee is intentionally composed to represent a cross-section of the University community.



Steering Committee Nomination Process

- A link to the nomination form will be available today.
- Self-nominations are accepted.
- Nominations must be submitted by 4:30 p.m.
- Individuals selected to participate on the Steering Committee will be notified via email by November 3, 2016.
- First Steering Committee meeting is scheduled for Wednesday, November 9, 2016.



Steering Committee Desired Talents

The president seeks candidates who meet the following criteria:

- Having excellent interpersonal and communication skills including a willingness to work collaboratively with others.
- Ability to engage conflict constructively, while demonstrating openness to those with whom you disagree.
- Desire to contribute to the University's strategic planning process.
- Commitment to attend and participate in monthly Steering Committee meetings.



Goal Stewards and Working Groups

Goal Stewards

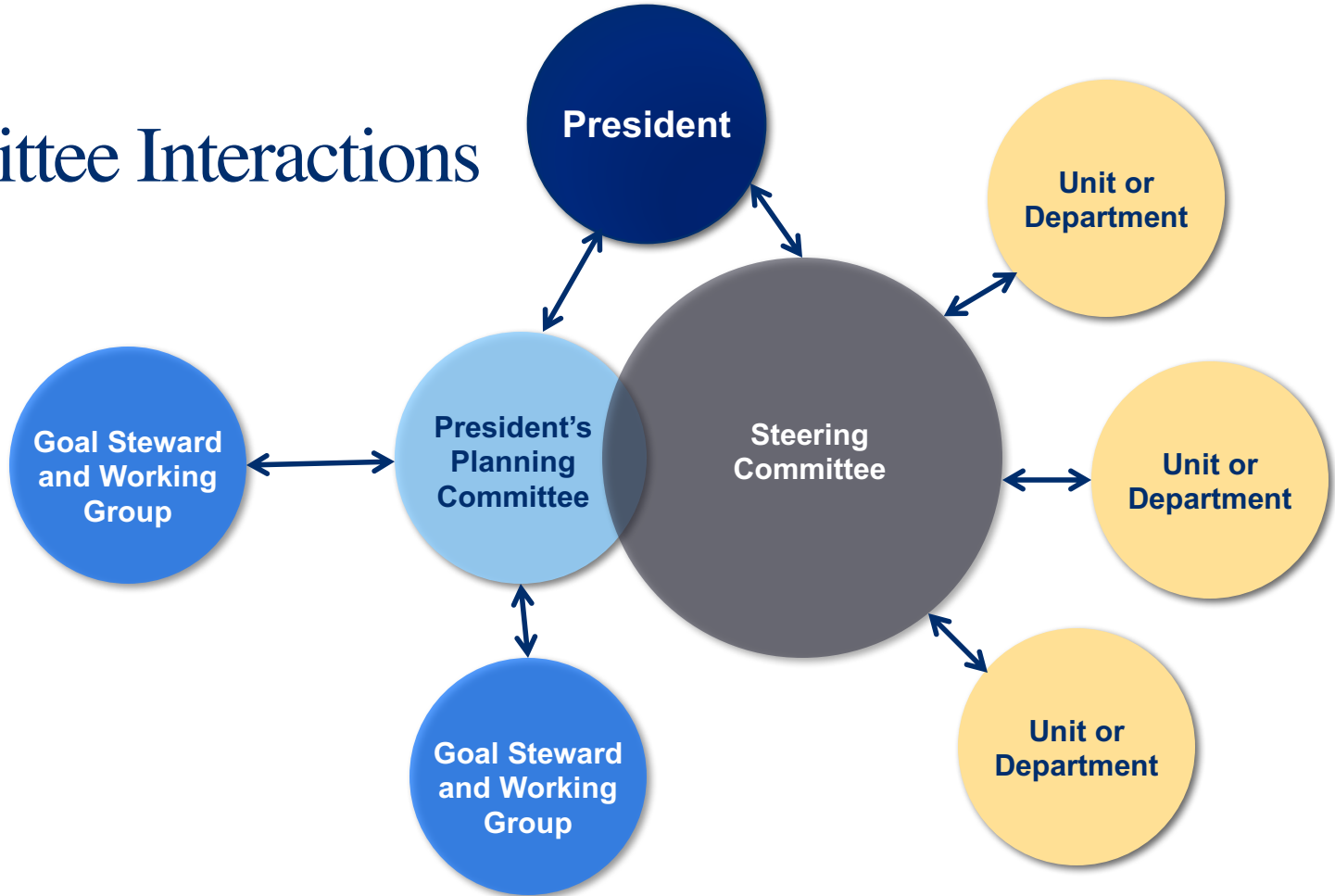
- Goal stewards are leaders of work groups assigned accountability for executing, implementing, and achieving the goals and associated tactics in the University's strategic plan.

Goal Working Groups

- Work under the leadership of goal stewards to execute, implement, and achieve the goals and associated tactics in the University's strategic plan.



Committee Interactions



After reviewing the themes, where do you see yourself and your department or unit fitting into the working themes?

We want your feedback!

www.creighton.edu/strategic-plan

Planning Timeline

Fall 2015

- Listening sessions

Spring 2016

- University Convocation
- Campus-wide Area Examen process conducted
- All-University round-table discussion

Summer 2016

- Vice Provost Mary Chase and School of Law Dean Paul McGreal appointed as co-chairs to lead process
- President's Council prepared area assessments
- President's Council retreat dedicated to planning

Fall 2016

- President's Planning Committee appointed and meetings began
- Establishment of working themes
- Town Hall session
- Steering Committee nomination process
- Educational Advisory Board external environmental scan presentation
- First Steering Committee meeting
- Initial goals and goal stewards identified

Founder's Week
Convocation will be held
on February 7, 2017.

